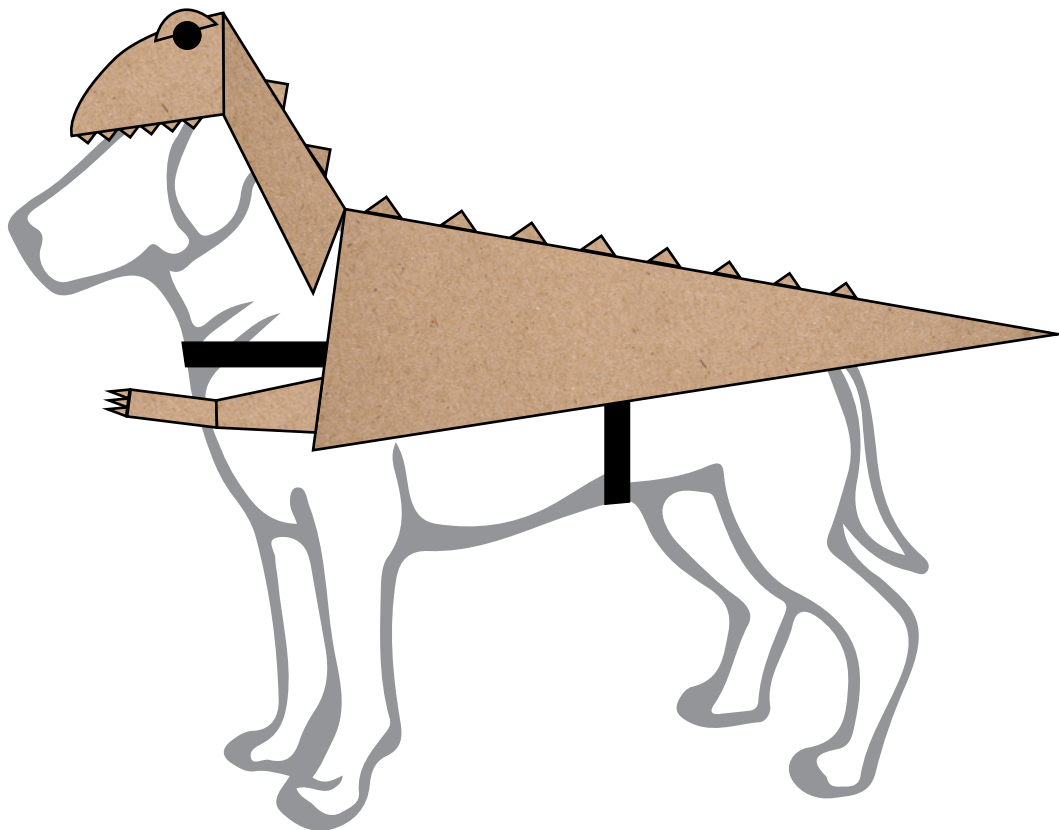
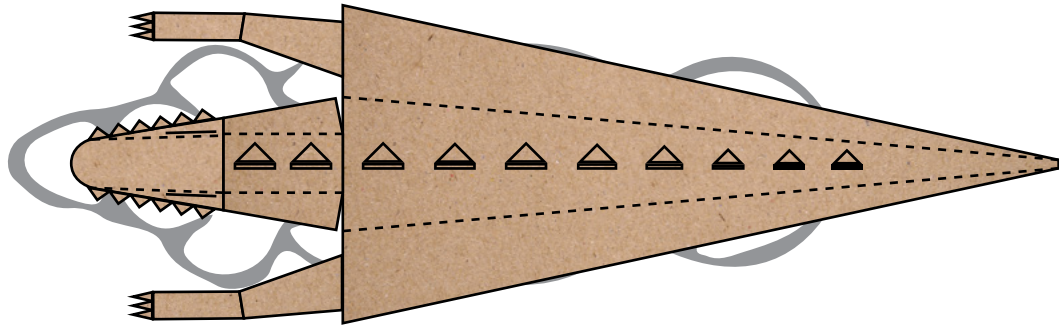


# DIY Cardboard Doggo Costume

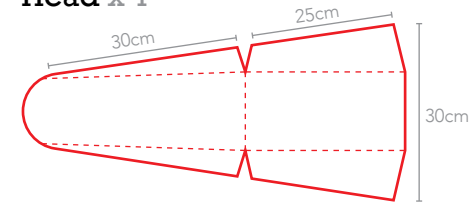
Dinosaur Doggo (Large)



## Costume Parts

Grey sections are flaps and to be used to join the different parts.  
Dashed lines indicate a fold.

Head x 1



Eye Lids x 2



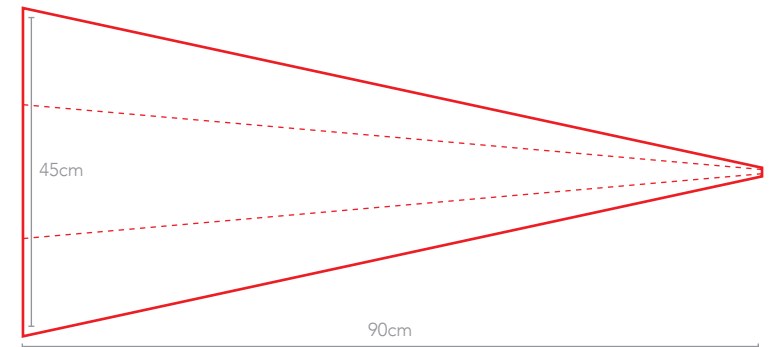
Eye Balls x 2



Teeth x 2



Tail x 1



Spikes x 10



Arms x 2

